

**DURABOOK®S15AB**

# **Rugged Notebook PC**

User's Manual



# Table of Contents

COPYRIGHT.....	4
REGULATORY STATEMENT.....	4
<i>Federal Communication Commission Interference Statement</i> .....	4
<i>IMPORTANT NOTE:</i> .....	5
<i>Radiation Exposure Statement:</i> .....	5
<i>CAUTION</i> .....	5
<i>ATTENTION</i> .....	5
<i>CLASS 1 LASER PRODUCT</i> .....	6
<i>PRODUIT LASER DE CLASSE 1</i> .....	6
<b>BEFORE YOU START .....</b>	<b>8</b>
PACKAGE CONTENTS .....	8
COMPONENTS .....	9
<i>Front View</i> .....	9
<i>Back View</i> .....	10
<i>Left View</i> .....	11
<i>Right View</i> .....	12
<i>Rear View</i> .....	12
<i>Status Indicators</i> .....	13
<b>GETTING STARTED .....</b>	<b>14</b>
POWERING UP YOUR NOTEBOOK .....	14
<i>Connecting the AC Adapter</i> .....	14
<i>Using Battery Power</i> .....	14
INSTALLING THE BATTERY .....	15
<i>Charging the Battery</i> .....	16
<i>Charging Time</i> .....	16
<i>Checking the Battery Level</i> .....	16
<i>When to replace the Battery Pack</i> .....	17
<i>Removing the Battery</i> .....	17
STARTING YOUR NOTEBOOK .....	19
<i>Turning On Your Notebook</i> .....	19
<i>Shutting Down Your Notebook</i> .....	19
USING THE KEYBOARD.....	22
USING THE TOUCH PAD.....	23
USING THE MEMORY CARDS .....	24
<i>Inserting a Memory Card</i> .....	24
<i>Removing a Memory Card</i> .....	24
USING THE SMART CARD .....	26
<i>Inserting a Smart Card</i> .....	26
USING THE SIM CARD .....	27
<i>Inserting a SIM Card</i> .....	27

USING THE OPTICAL DISK DRIVE .....	30
<i>Placing a Disc</i> .....	30

## **CONNECTING TO WIRELESS CONNECTIONS..... 31**

CONNECTING TO A WIRELESS LOCAL AREA NETWORK .....	31
CONNECTING TO A BLUETOOTH DEVICE .....	35
CONNECTING TO A WIRELESS WIDE AREA NETWORK (WWAN) .....	42

## **USING THE BIOS SETUP UTILITY..... 46**

BIOS SETUP MENU.....	46
STARTING THE BIOS SETUP UTILITY .....	46
NAVIGATING AND ENTERING INFORMATION IN BIOS.....	47
MAIN MENU .....	48
ADVANCED MENU .....	48
BOOT MENU.....	49
SECURITY MENU.....	49
SAVE & EXIT MENU .....	50

## **WINDOWS RECOVERY (WINDOWS 10) ..... 51**

# Copyright

Copyright© 2017. All rights reserved.

No part of this user manual may be transmitted, stored in a retrieval system, or translated into any language or computer language, in any form or by any means, without the prior written permission of the manufacturer. Information is subject to change without prior notice.

# Regulatory Statement

## **Federal Communication Commission Interference Statement**

This equipment has been tested and found to comply with the limits for a Class B digital device, pursuant to Part 15 of the FCC Rules. These limits are designed to provide reasonable protection against harmful interference in a residential installation. This equipment generates, uses and can radiate radio frequency energy and, if not installed and used in accordance with the instructions, may cause harmful interference to radio communications. However, there is no guarantee that interference will not occur in a particular installation. If this equipment does cause harmful interference to radio or television reception, which can be determined by turning the equipment off and on, the user is encouraged to try to correct the interference by one of the following measures:

- Reorient or relocate the receiving antenna.
- Increase the separation between the equipment and receiver.
- Connect the equipment into an outlet on a circuit different from that to which the receiver is connected.
- Consult the dealer or an experienced radio/TV technician for help.

FCC Caution: Any changes or modifications not expressly approved by the party responsible for compliance could void the user's authority to operate this equipment.

This device complies with Part 15 of the FCC Rules. Operation is subject to the following two conditions: (1) This device may not cause harmful interference, and (2) this device must accept any interference received, including interference that may cause undesired operation.

## **IMPORTANT NOTE:**

### **Radiation Exposure Statement:**

This equipment complies with FCC radiation exposure limits set forth for an uncontrolled environment. This equipment should be installed and operated with minimum distance 20cm between the radiator & your body.

This transmitter must not be co-located or operating in conjunction with any other antenna or transmitter.

Country Code selection feature to be disabled for products marketed to the US/CANADA

This wireless adapter is restricted to indoor use due to its operation in the 5.15 to 5.25 and 5.470 to 5.75GHz frequency ranges. FCC requires this wireless adapter to be used indoors for the frequency ranges 5.15 to 5.25GHz and 5.470 to 5.75GHz to reduce the potential for harmful interference to co-channel mobile satellite systems. No configuration controls are provided for Intel® wireless adapters allowing any change in the frequency of operations outside the FCC grant of authorization for U.S. operation according to Part 15.407 of the FCC rules.

## **CAUTION**

RISK OF EXPLOSION IF BATTERY IS REPLACED BY AN INCORRECT TYPE. REPLACE ONLY WITH THE SAME OR EQUIVALENT TYPE RECOMMENDED BY THE MANUFACTURER. DISPOSE OF USED BATTERIES ACCORDING TO THE INSTRUCTIONS.

## **ATTENTION**

Il y a danger d'explosion s'il y a remplacement incorrect de la batterie. Remplacer uniquement avec une batterie du même type ou d'un type équivalent recommandé par le constructeur. Mettre au rebut les batteries usagées conformément aux instructions du fabricant.

## **CLASS 1 LASER PRODUCT**

### **LASERSCHUTZKLASSE 1 PRODUKT TO EN60825**

**CAUTION:** THIS APPLIANCE CONTAINS A LASER SYSTEM AND IS CLASSIFIED AS A "CLASS 1 LASER PRODUCT." TO USE THIS MODEL PROPERLY, READ THE INSTRUCTION MANUAL CAREFULLY AND KEEP THIS MANUAL FOR FUTURE REFERENCE. IN CASE OF ANY TROUBLE WITH THIS MODEL, PLEASE CONTACT YOUR NEAREST "AUTHORIZED SERVICE STATION." TO PREVENT DIRECT EXPOSURE TO THE LASER BEAM, DO NOT TRY TO OPEN THIS ENCLOSURE.

## **PRODUIT LASER DE CLASSE 1**

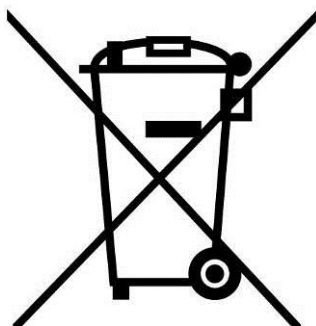
### **LASERSCHUTZKLASSE 1 PRODUKT TO EN60825**

**ATTENTION:** CE PRODUIT CONTIENT UN SYSTÈME LASER ET EST CLASSÉ EN TANT QUE « PRODUIT LASER DE CLASSE 1 ». POUR UTILISER CE MODÈLE CORRECTEMENT, LISEZ LE MANUEL D'INSTRUCTIONS ATTENTIVEMENT ET CONSERVEZ-LE POUR RÉFÉRENCE FUTURE. EN CAS DE PROBLÈMES AVEC CE MODÈLE, VEUILLEZ CONTACTER VOTRE « STATION DE SERVICE AUTORISÉE » LA PLUS PROCHE. POUR ÉVITER UNE EXPOSITION DIRECTE AUX FAISCEAUX LASER, N'ESSEYER PAS D'OUVRIER CE BOÎTIER.

## ***ANNEX IV***

### **Symbol for the marking of electrical and electronic equipment**

The symbol indicating separate collection for electrical and electronic equipment consists of the crossed-out wheeled bin, as shown below. The symbol must be printed visibly, legibly and indelibly.



**CAUTION FOR ADAPTER**

THE RUGGED NOTEBOOK PC IS FOR USE WITH DEDICATED AC ADAPTER (DC +19V, 65W).

**NOTE POUR L'ADAPTATEUR**

L'ORDINATEUR PORTABLE ROBUSTE EST À UTILISER AVEC L'ADAPTATEUR SECTEUR SPÉCIFIQUE (+19 V CC, 65W).

**BATTERY SAFETY**

DANGER OF EXPLOSION IF BATTERY IS INCORRECTLY REPLACED.  
REPLACE ONLY WITH THE SAME OR EQUIVALENT TYPE RECOMMENDED BY THE MANUFACTURER. DISPOSE OF USED BATTERIES ACCORDING TO THE MANUFACTURER'S INSTRUCTIONS.

**SÉCURITÉ DE LA BATTERIE**

DANGER D'EXPLOSION SI LA BATTERIE EST NON CONFORMES.  
REPLACER UNIQUEMENT AVEC LE MÊME TYPE OU ÉQUIVALENT RECOMMANDÉ PAR LE FABRICANT. RECYCLAGE DES BATTERIES USAGÉES SELON LES INSTRUCTIONS DU FABRICANT.

**CAUTION FOR RJ-45**

The RJ-45 jack is not used for telephone line connection.

**ATTENTION POUR RJ-45**

RJ-45 n'est pas utilisé pour l'accès de la ligne téléphonique.

# Before You Start

Congratulations on your purchase of this notebook.

This rugged notebook is portable and provides users with maximum mobile computing experience in a wide range of working environments. Before you begin using your notebook, read this chapter to familiarize yourself with the main components installed in the system.

## Package Contents

If any of following items is damaged, please contact your retailer.



Notebook



Power cord



DC 19V 65W power  
adapter



Lithium Polymer Battery  
Pack



### NOTE

- The pictures are for reference only, actual items may slightly differ.



# Components

## Front View

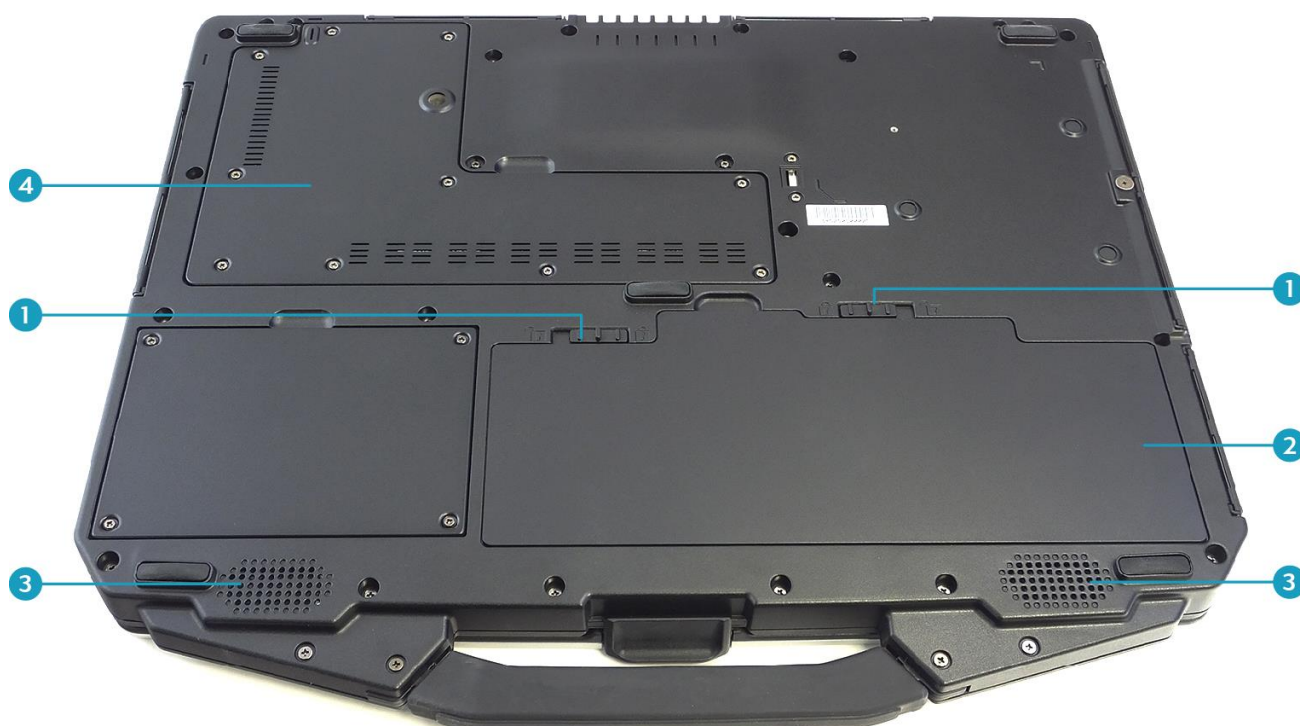


No.	Item	Description
1	Microphone	Record the surrounding sound.
2	Web camera	Use for video conference.
3	Display screen	Provide visual output.
4	Power button	Press to turn your notebook on or off.
5	Waterproof keyboard	Press the keys to input information.
6	Touch pad	Use to point, select, drag, or scroll objects on the screen.
7	Touch pad button	Press to select objects or display a shortcut menu.

## Before You Start

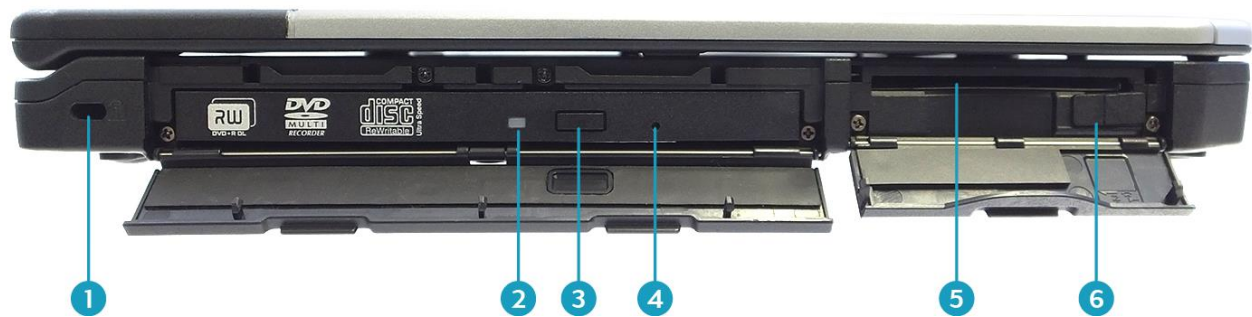
No.	Item	Description
8	Device Indicators (Power, Wireless, HDD, Caps Lock, Num lock, Battery)	Indicate the corresponding function status.

## Back View



No.	Item	Description
1	Battery latch	Slide to the unlock position to release the battery.
2	Battery compartment	Install the battery.
3	Speakers	Emit sound.
4	CTO door	Remove the door to access the SIM card slot.

## Left View



No.	Item	Description
1	Kensington lock slot	Connect to a Kensington-compatible notebook security lock.
2	ODD LED indicator	A blinking ODD LED indicates ODD activity.
3	Eject button	Push to open the tray.
4	Pin Hole Eject	If the <b>Eject</b> button fails to work properly, insert a paper clip into this hole to open the tray. <b>CAUTION:</b> Turn off the notebook before performing manual ejection.
5	Smart card reader	Use to insert smart cards.
6	RF switch	Slide it to the left to enable all wireless network (WLAN) and Bluetooth communications.

**Right View**

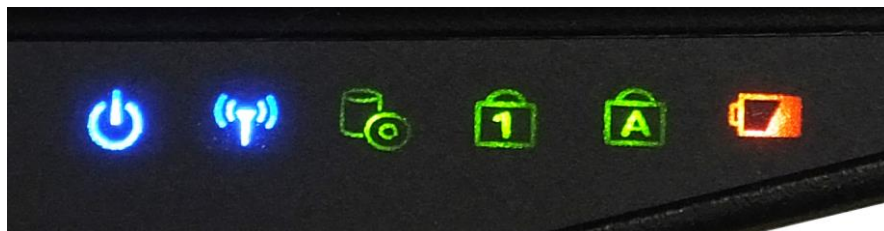
No.	Item	Description
1	Card reader	Use to insert memory cards to transfer pictures, music, and data between your notebook and flash compatible devices. The card reader supports SD (Secure Digital), SDXC, Mini-SD (with adapter).
2	Earphone jack	Connect headphones or external speakers.
3	USB 2.0 ports (x2)	Connect USB 2.0 peripheral devices.
4	DC-in jack	Connect the power adapter.







**Rear View**

No.	Item	Description
1	USB 3.0 ports (x2)	Connect USB 3.0 peripheral devices.
2	RJ-45 port	Connect to a local area network (LAN) using an Ethernet cable.
3	HDMI output port	Connect an HDMI device such as an external HDMI LCD TV.
4	VGA port	Connect to a display device such as an external monitor or a projector.
5	RS-232 port	Connect a serial peripheral device.

## Status Indicators

The status indicators in the bottom right corner of the notebook light up when a particular function of the notebook is active. Each indicator is marked with a symbol.



Icon	Item	Description
	<b>Power</b>	The LED always lights on (blue) when the system is running. When the system is in sleep mode, the LED blinks.
	<b>RF</b>	Indicate the status of RF (WLAN, Bluetooth, or WWAN/GPS) communication. The LED always lights on (blue) when the function is enabled.
	<b>HDD</b>	A blinking HDD LED indicates HDD activity (data is being read or written).
	<b>Num Lock</b>	Lights on when Num Lock is activated.
	<b>Caps Lock</b>	Lights on when Caps Lock is activated.
	<b>Battery</b>	Indicate the battery status: <ul style="list-style-type: none"> <li>• Green light means the battery is fully charged or the battery capacity higher than 95%.</li> <li>• Orange light means the battery is being charged.</li> <li>• Blinking orange light means the battery cannot be fully charged over 8 hours of charging.</li> <li>• Blinking red light means the battery power is low (less than 7%).</li> </ul>

# Getting Started

This chapter will guide you on how to use your notebook.

## Powering Up Your Notebook

Your notebook can be powered up using the AC adapter or the Lithium-ion battery.

### Connecting the AC Adapter

The AC adapter powers up your notebook and charges the battery.



1. Connect the AC adapter to the DC-in jack of your notebook.
2. Connect the AC adapter to the power cord.
3. Plug the power cord to an electrical outlet.

### Using Battery Power

1. Install a charged battery into the battery compartment.
2. Remove the AC adapter (if plugged). Your notebook will automatically use the battery power.



#### NOTE

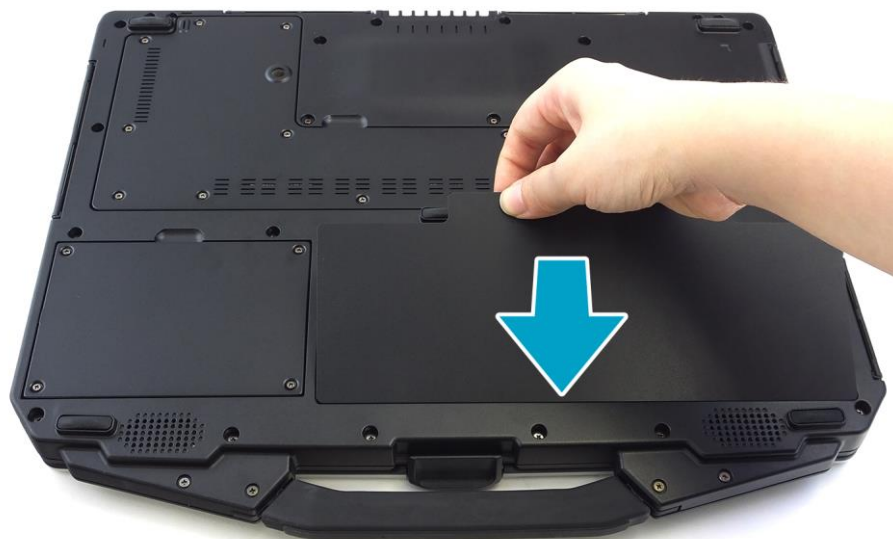
- If you are using the notebook with the battery power for the first time, be sure that the battery is fully charged before you operate the notebook.



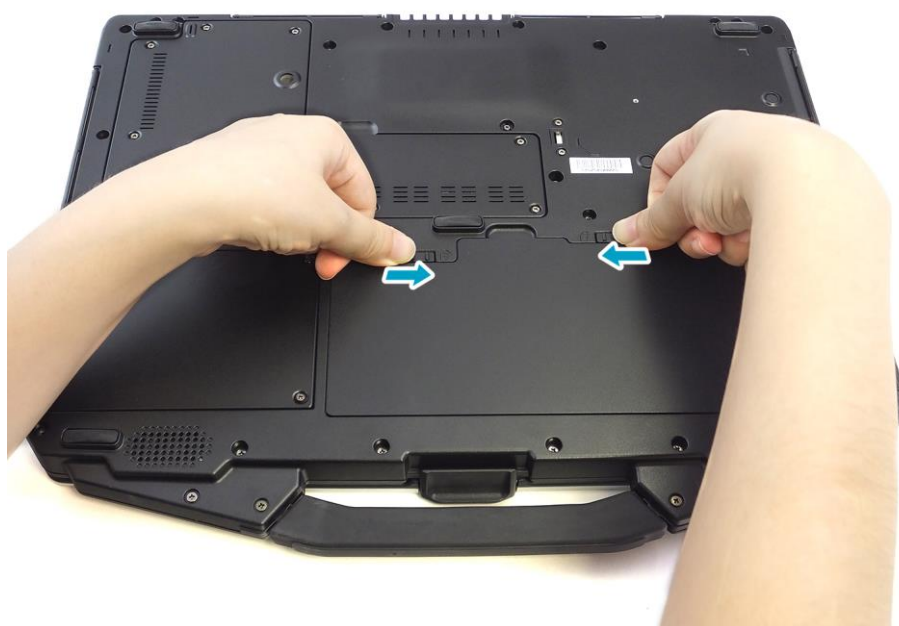
# Installing the Battery

To install the battery, follow the steps below:

1. Align and insert the battery into the battery compartment.



2. Push completely until the battery locks into place.
3. Slide the latch to the lock position (🔒) to secure the battery.



## Getting Started

### Charging the Battery

The Lithium-ion battery is not fully-charged upon purchase.

To charge the battery, follow the steps below:

1. Install the battery to your notebook. See procedures above.
2. Connect the AC adapter to the DC-in jack of your notebook.
3. Connect the AC adapter to the power cord.
4. Plug the power cord to an electrical outlet.

### Charging Time

Battery pack type	Charging time
Standard (Lithium polymer battery pack)	3.5 hours (system off); 5~6 hours (system on)



#### NOTE

- The charging time may be longer if you are using your notebook while charging the battery.

#### CAUTION

- DO NOT charge the battery if the temperature is below 0°C or higher than 45°C.
- Use only the supplied AC adapter. Using other AC adapters may damage the battery or your notebook.

#### ATTENTION

- NE PAS charger la batterie si la température est inférieure à 0 ° C ou supérieures à 45 ° C.
- Utilisez uniquement l'adaptateur secteur fourni. L'utilisation d'autres adaptateurs secteur peut endommager la batterie ou de votre tablette PC.

### Checking the Battery Level

It is important that you monitor the battery status regularly to ensure you do not run out of power at a critical moment.

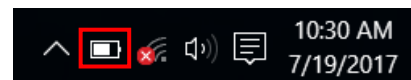
To check the remaining battery power, click the battery icon in the system tray.



Windows 7



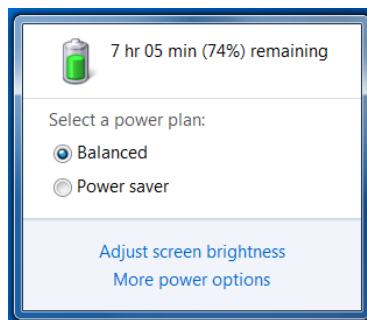
Windows 8.1



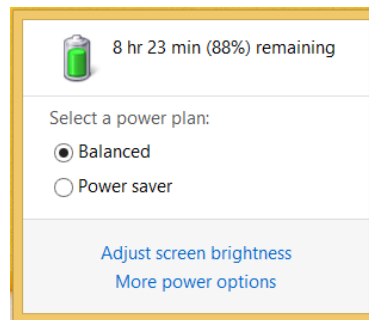
Windows 10



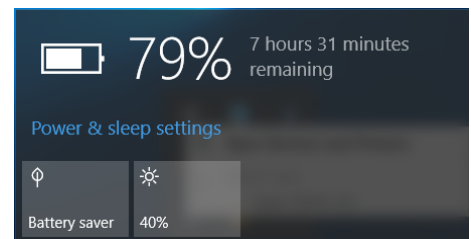
The battery screen appears:



**Windows 7**



**Windows 8.1**



**Windows 10**

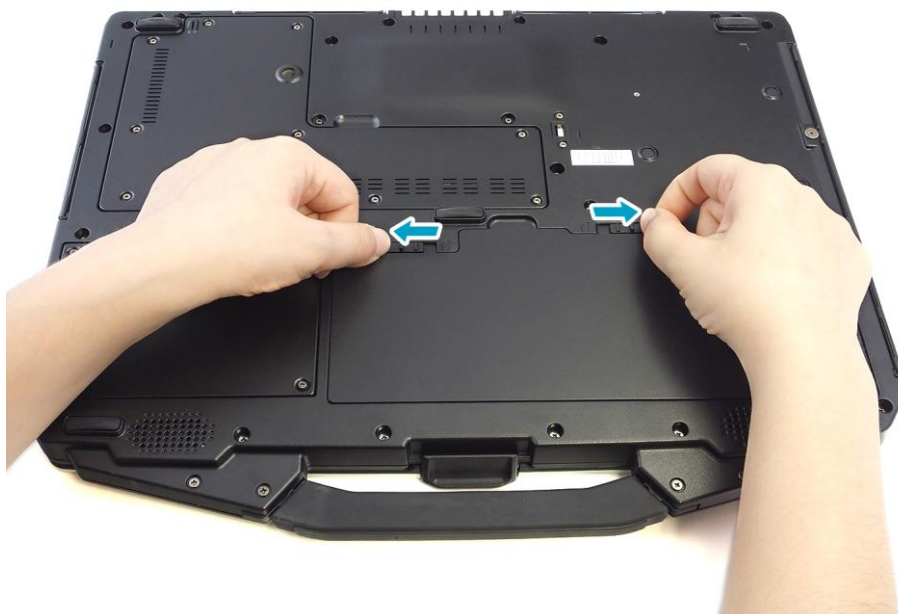
## When to replace the Battery Pack

The battery performance gradually decreases over time and usage. We recommend you to replace your battery pack after 18 to 24 months of usage.

## Removing the Battery

To remove the battery, follow the steps below:

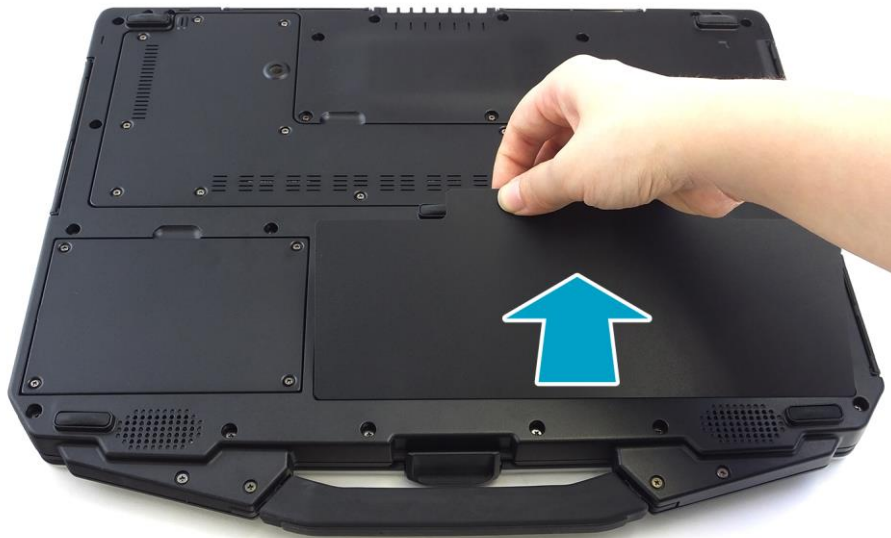
1. Slide the battery latch to the unlock position (🔓).



## Getting Started

---

2. Remove the battery out of the battery compartment.



# Starting Your Notebook

## Turning On Your Notebook

1. To open the display panel, lift the cover lid up to upright position.



2. Press the  button until the Power LED lights up.

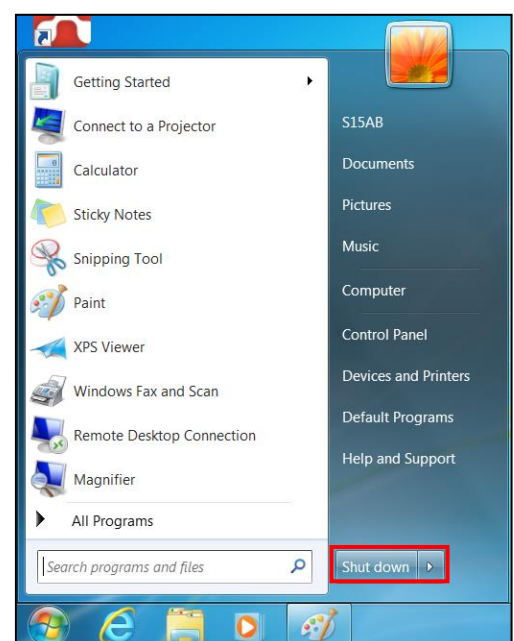
## Shutting Down Your Notebook

It is important to properly shut down your notebook to avoid the loss of unsaved data. To shut down your notebook, do the following:

### Windows 7

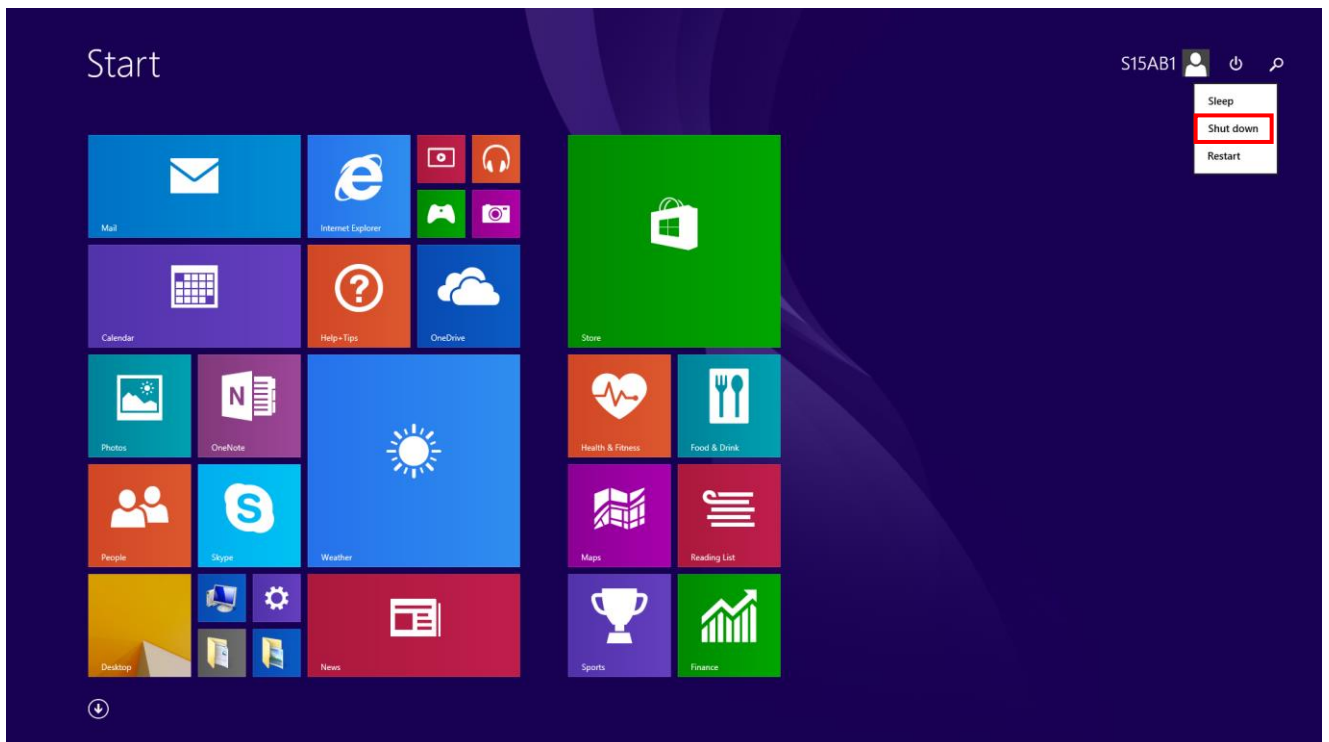
Click **Start** > **Shut down**.

Wait for your notebook to turn off power completely before removing the power source (if necessary).

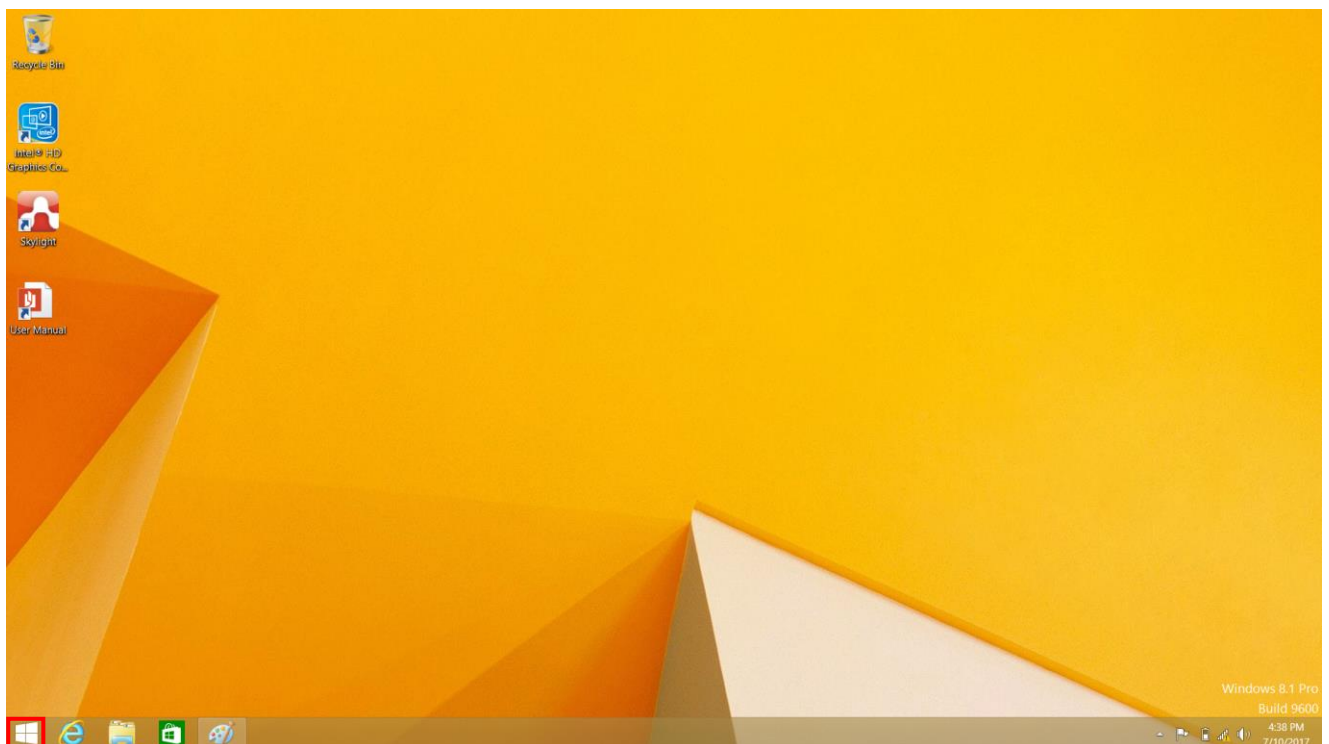


### Windows 8.1

Click  and select **Shut down**.



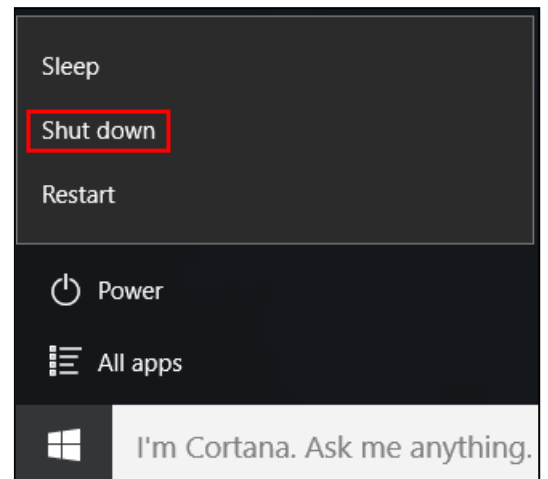
- If you are on the desktop, click  to return to the **Start** screen.



## Windows 10

Click  > **Power** > **Shut down**.

Wait for your notebook to turn off power completely before removing the power source (if necessary).



# Using the Keyboard

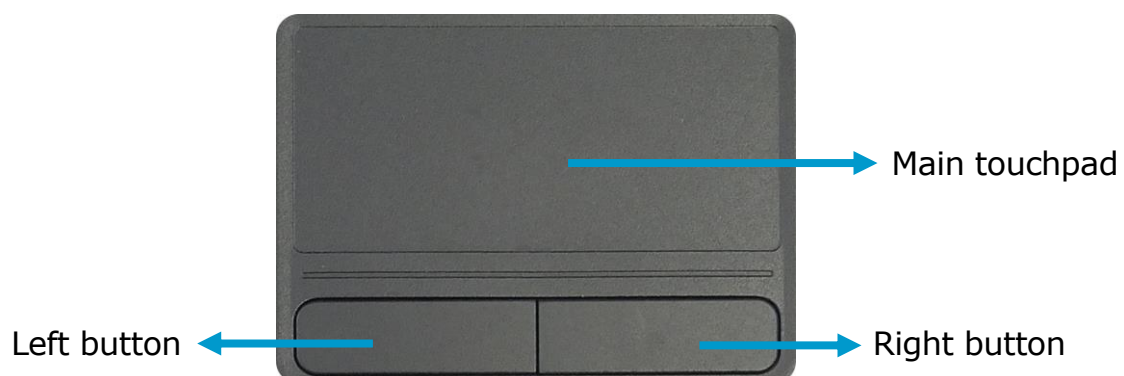


No.	Keys	Description
1	Function keys	These function keys are used to perform designated tasks. The tasks for each key may vary from one application to another.
2	[Fn]	Press the [Fn] key in combination with other keys to execute a command.
	[Fn] + F1	Enables/Disables the Bluetooth function.
	[Fn] + F2	Enables/Disables the 3G/GPS function.
	[Fn] + F3	Enables/Disables the WLAN function.
	[Fn] + F4	Switches to suspend mode (Suspend to RAM/HDD).
	[Fn] + F5	Toggles between LCD, External display, or both.
	[Fn] + F6	Decreases the brightness level.
	[Fn] + F7	Increases the brightness level.
	[Fn] + F8	Decreases the volume by one level.
	[Fn] + F9	Increases the volume by one level.
	[Fn] + F10	Turns on or mutes the volume.
	[Fn] + F11	Toggles the touch pad to on/off.

No.	Keys	Description
2	[Fn] + F12	Toggles the keyboard backlight to on/off (only for backlit keyboard).
3	Windows key	Press to display the <b>Start</b> menu. This action is the same as clicking the Start icon.
4	Numeric keypad	Press the <b>Num Lk</b> key to activate the numeric keypad. Press the keys on the numeric keypad to enter numbers or operands as you would on a calculator.
5	Application key	Press to display an application shortcut menu. This action is the same as right-clicking a mouse button.

## Using the Touch Pad

The touch pad is a cursor-pointing device that provides all the features of a two-button mouse. Its primary function is to move the cursor around the screen. You can also point, select, or drag items or objects on the screen.



### Point

Slide your finger on the touch pad to point the cursor to an item or object on the screen.

### Click

To left-click, move the cursor to the item or object on the screen, then lightly tap the touch pad or press the left button.

To right-click, move the cursor to the item or object on the screen, then press the right button.

### Double-click

To double-click, move the cursor to the item or object on the screen, then tap the touch pad twice or press the left button twice.



### Drag

To drag an item or object, press and hold the left button then slide your finger on the touch pad to move the item or object.

### Scroll

To scroll a page, press and hold the left button then slide your finger on the touch pad to scroll a page.

## Using the Memory Cards

Your notebook supports different types of memory cards to provide faster data transfer. Supported types are as follows:

- SD card
- SDXC card
- Mini-SD card (with adapter)

### Inserting a Memory Card

1. Open the I/O port cover.
2. With the label side up, push the memory card into the memory card slot until it clicks into place.



### Removing a Memory Card

It is important to remove the memory card properly. Improper removal may cause the data in the memory card to be corrupted and your notebook to malfunction.

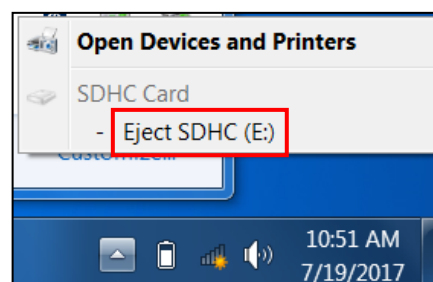
To properly remove the memory card, follow the steps below:

#### Windows 7

1. Click the removable disk icon on the system tray.
2. Click **Eject SDHC**.

The system confirms that the device can be safely removed.

3. Push the memory card to eject it.





4. Pull the card out from the slot.

## **Windows 8.1**

1. Click the removable disk icon on the system tray.



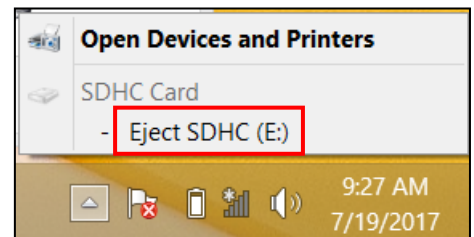
### **TIP**

- If the system tray is not visible on the screen, point your mouse to the bottom of the display to bring up the system tray.
- To switch to the desktop, click the desktop tile ( ).

2. Click **Eject SDHC**.

The system confirms that the device can be safely removed.

3. Push the memory card to eject it.
4. Pull the card out from the slot.

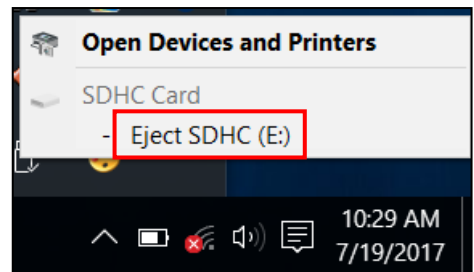


## **Windows 10**

1. Click the removable disk icon on the system tray.
2. Click **Eject SDHC**.

The system confirms that the device can be safely removed.

3. Push the memory card to eject it.
4. Pull the card out from the slot.



# Using the Smart Card

Your notebook is equipped with a built-in smart card reader that allows you to make secure purchases, store security information, and provide identification and information using a smart card.

## Inserting a Smart Card

1. Open the I/O port cover.
2. Insert a smart card into the smart card slot.

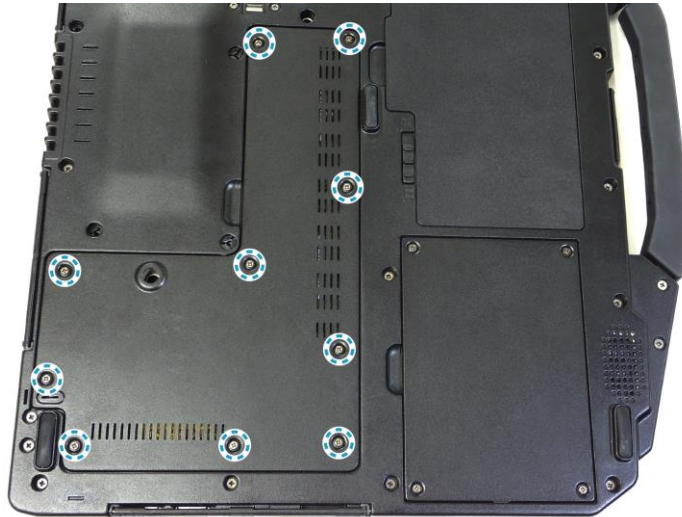


# Using the SIM Card

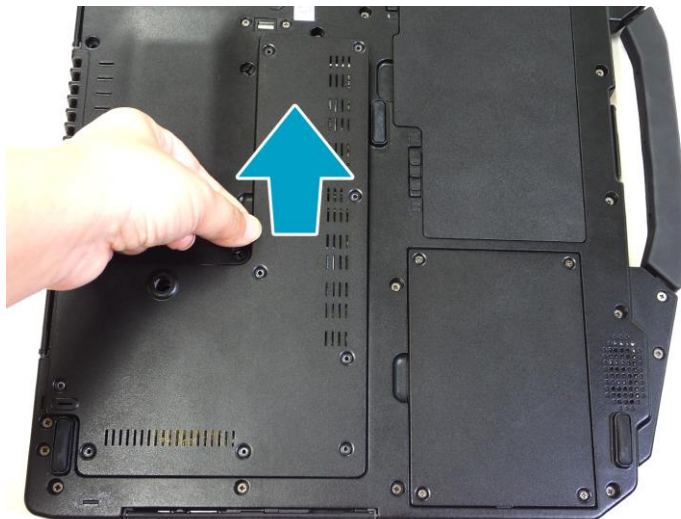
You can use a SIM card for wireless internet access.

## Inserting a SIM Card

1. Remove the screws securing the CTO door.



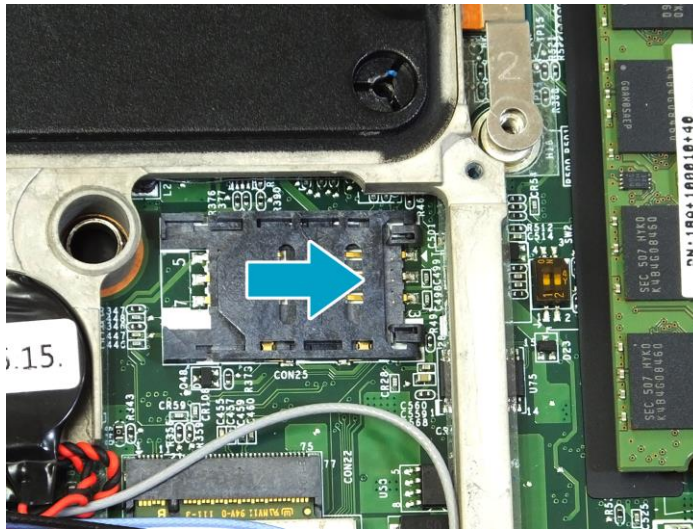
2. Remove the CTO door.



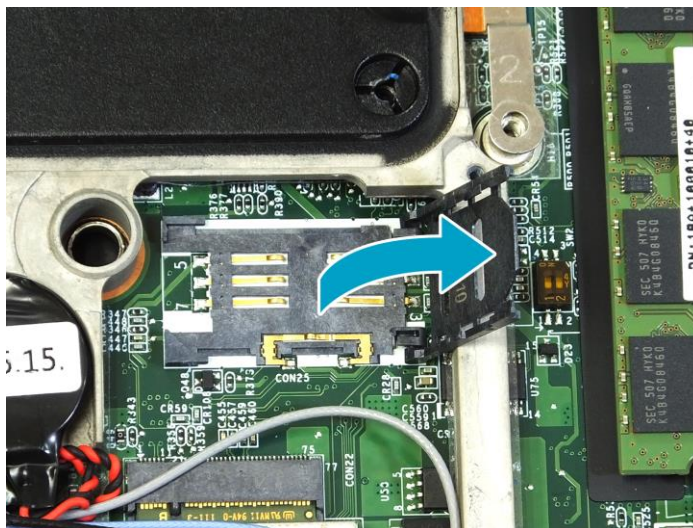
## Getting Started

---

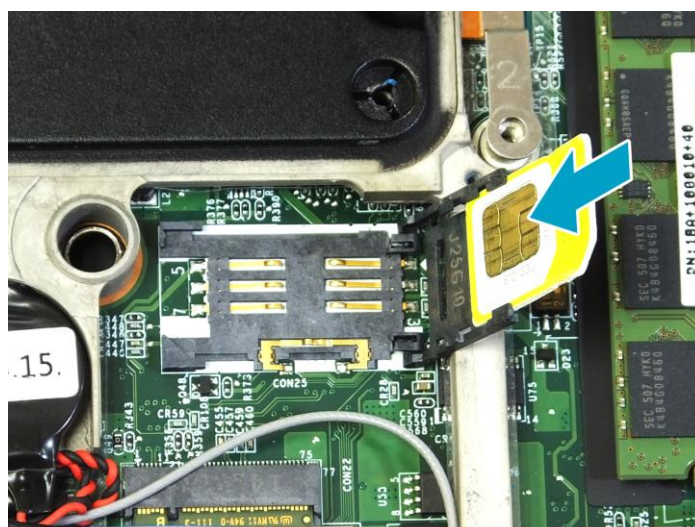
3. Push the SIM card slot forward to release it from the latch.



4. Lift the SIM card slot upward.

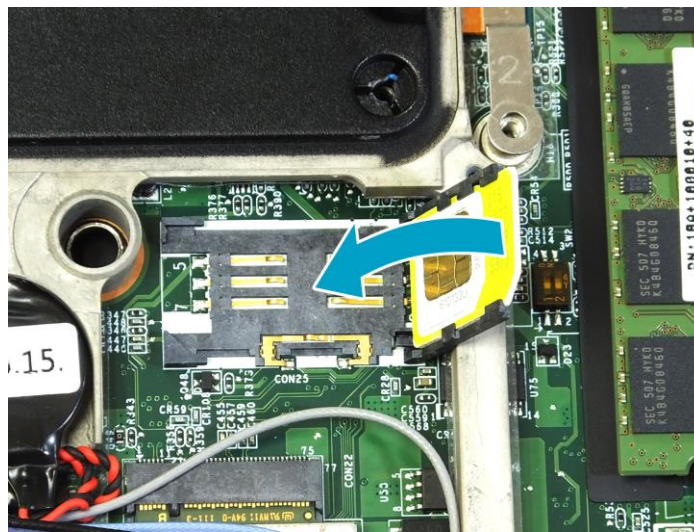


5. Slide a SIM card into the SIM card slot.

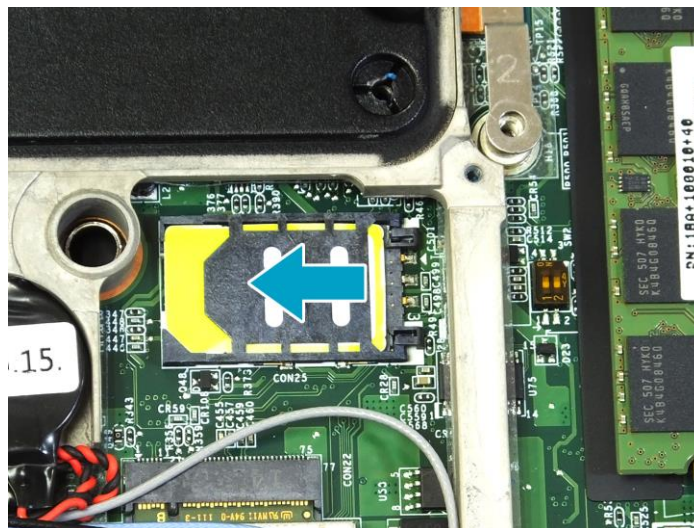




6. Gently place down the SIM card slot.



7. Push the SIM card slot backward until it locks into place.



8. Replace the CTO door. Then secure the CTO door using the screws.

# Using the Optical Disk Drive

You can use the optical disk drive (ODD) to play or record DVD or CD disc.

## Placing a Disc

1. Open the ODD cover.



2. Press the **Eject** button to eject the tray.



3. Place the disc on the tray.
4. Close the disc tray.

## Manual Ejection

If the **Eject** button fails to work properly, insert a paper clip into the **Pin Hole Eject** to open the tray.



### NOTE

- Be sure that the notebook is turned off before performing the manual ejection.

# Connecting to Wireless Connections

You can connect your notebook to a wireless local area network or Bluetooth. Before using a wireless built-in device, you need to turn the respective built-in wireless functions on.

## Connecting to a Wireless Local Area Network

Your notebook comes with a WLAN module. A wireless network can be added either when the network is detected or by manually entering the settings information.

To connect, follow the steps below:


### Windows 7

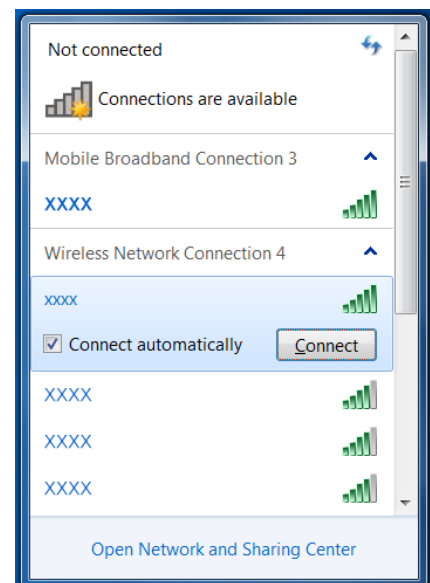
1. Open the I/O cover.



2. Slide the RF switch to the left to enable the wireless function.




3. Press both **Fn** and **F3** keys to turn on the wireless network function.
4. Click the wireless network icon (  ) on the system tray.
5. Available wireless network connections are displayed. Select the desired wireless network.
6. Click **Connect**.  
Some networks require a network security key or a password.






### TIP

Check **Connect automatically** box to automatically connect to this network when it is available.


7. Enter the network security key.
8. Click **OK**.
9. After the connection is established, you can see the wireless icon (  ) on the system tray.

### Windows 8.1

1. Open the I/O cover. Then slide the RF switch to the left to enable the wireless function.
2. Press both **Fn** and **F3** keys to turn on the wireless network function.
3. Click the wireless network icon (  ) on the system tray.



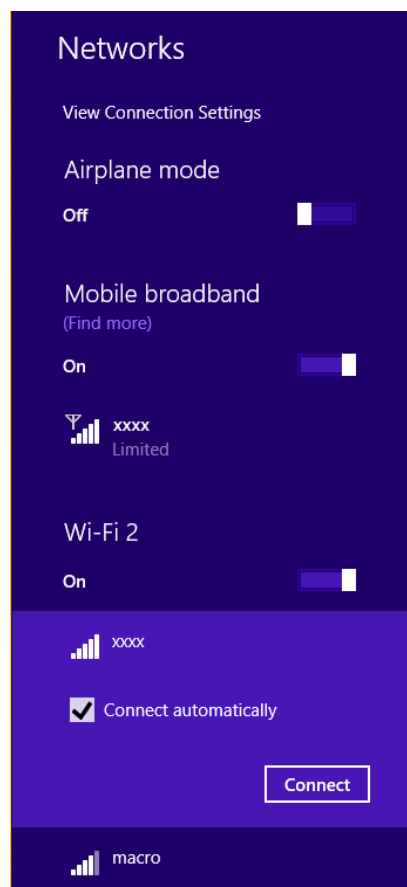
### TIP

- If the system tray is not visible on the screen, point your mouse to the bottom of the display to bring up the system tray.
  - To switch to the desktop, click the desktop tile (  ).
4. Available wireless network connections are displayed. Select the desired wireless network.
  5. Click **Connect**.  
Some networks require a network security key or a password.



### TIP

- Check **Connect automatically** box to automatically connect to this network when it is available.



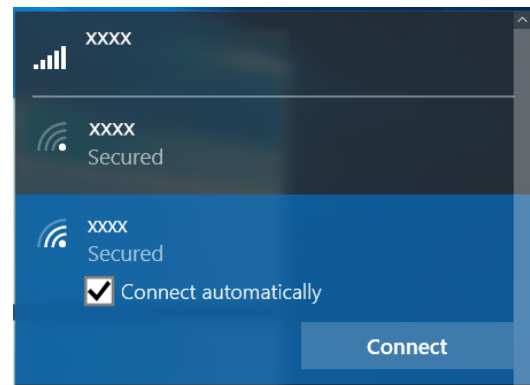


6. Enter the network security key and click **Next**.
7. A connection confirmation message appears on the screen. Click **Yes** or **No**.
8. After the connection is established, you can see the wireless icon (📶) on the system tray.



### Windows 10

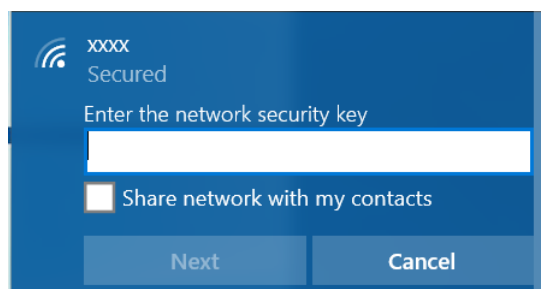
1. Open the I/O cover. Then slide the RF switch to the left to enable the wireless function.
2. Press both **Fn** and **F3** keys to turn on the wireless network function.
3. Click the wireless network icon (📶) on the system tray.
4. Available wireless network connections are displayed. Select the desired wireless network.
5. Click **Connect**.  
Some networks require a network security key or a password.



#### TIP

- Check **Connect automatically** box to automatically connect to this network when it is available.

6. Enter the network security key and click **Next**.



7. A connection confirmation message appears on the screen. Click **Yes** or **No**.
8. After the connection is established, you can see the wireless icon (📶) on the system tray.



### **NOTE**

- Wi-Fi access requires service from a wireless service provider. Contact your service provider for more information.
- Actual wireless connectivity will depend on system configuration. Please contact your dealer for more information.

# Connecting to a Bluetooth Device

Your notebook can connect and communicate with other Bluetooth-enabled devices.

To add a device, follow the steps below:

## **Windows 7**

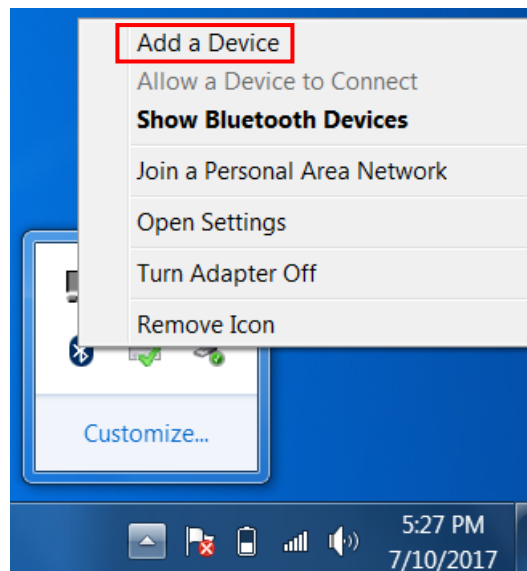
1. Open the I/O cover.



2. Slide the RF switch to the left to enable the wireless function.



3. Press both **Fn** and **F1** keys to turn on the Bluetooth function.
4. Click the Bluetooth icon (📶) on the system tray.
5. Click **Add a Device**. The system starts scanning for Bluetooth devices and displays the available devices.



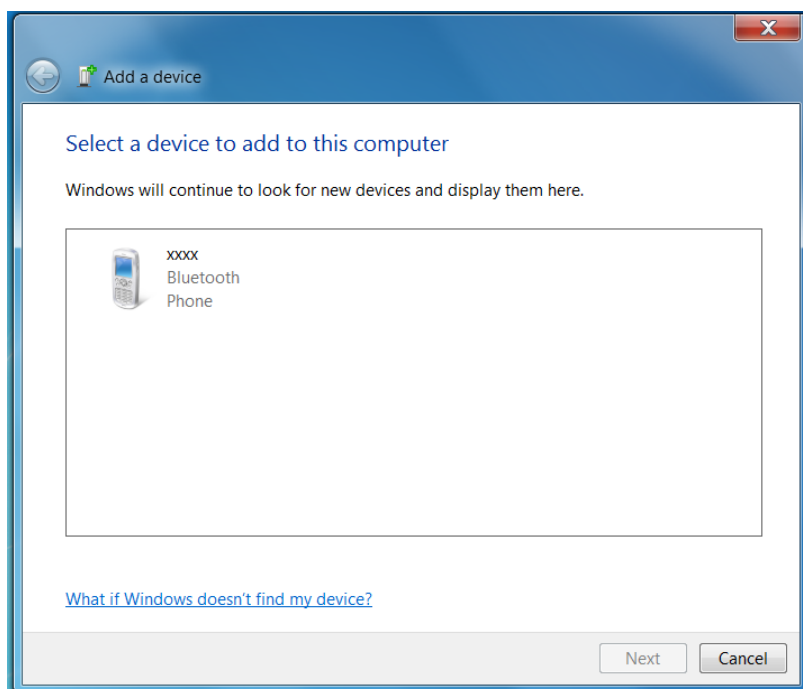
## **NOTE**

- If the device that you want to add does not appear on the screen, please check if the device is turned on and discoverable.

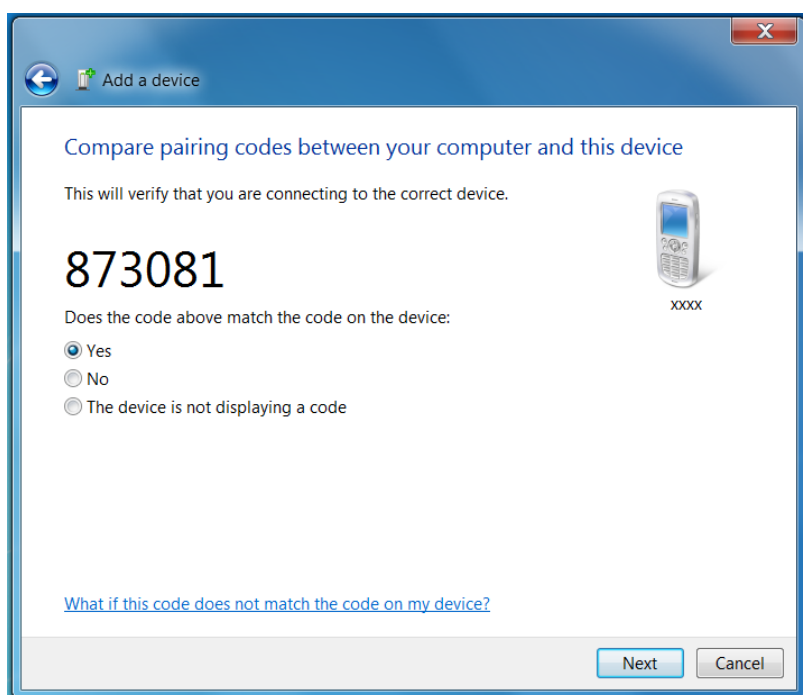
## Connecting to Wireless Connections

---

6. Click on a device, then click **Next** to continue.



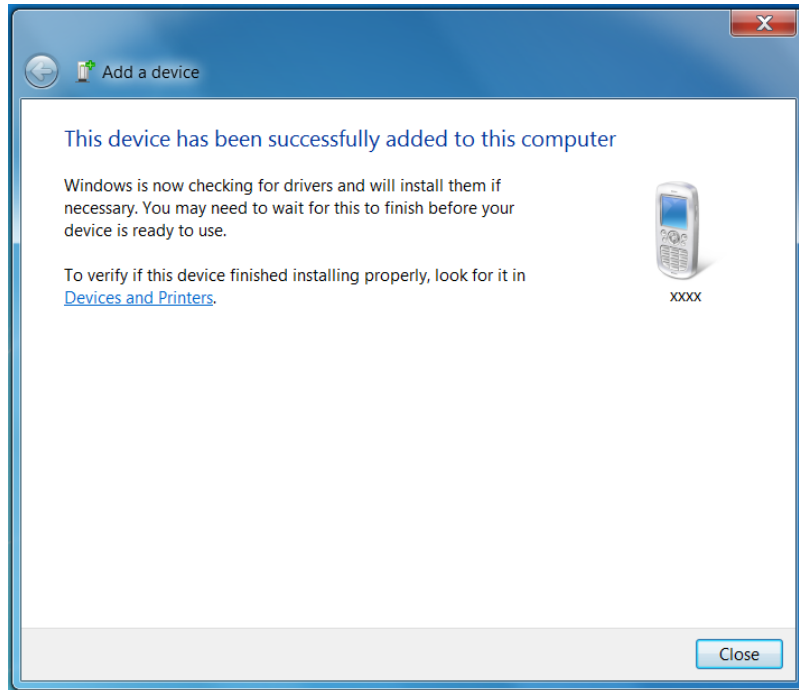
7. Select **Yes** to confirm the pairing code and click **Next** to start pairing.



### NOTE

- The pairing method varies depending the type of device you are pairing with. You may be prompted to enter the pairing code, confirm the pairing code, or the device will pair automatically.

- Click **Close** to complete the pairing connection.



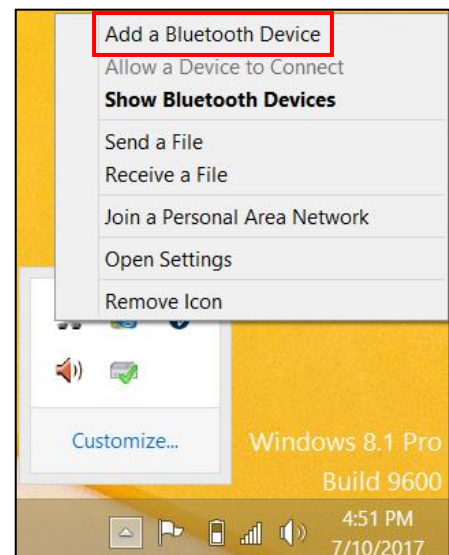
### Windows 8.1

- Open the I/O cover. Then slide the RF switch to the left to enable the wireless function.
- Press both **Fn** and **F1** keys to turn on the Bluetooth function.
- Click the Bluetooth icon (📶) on the system tray.



#### TIP

- If the system tray is not visible on the screen, point your mouse to the bottom of the display to bring up the system tray.
  - To switch to the desktop, click the desktop tile (🖥️).
- Click **Add a Bluetooth Device**. The system starts scanning for Bluetooth devices and displays the available devices.

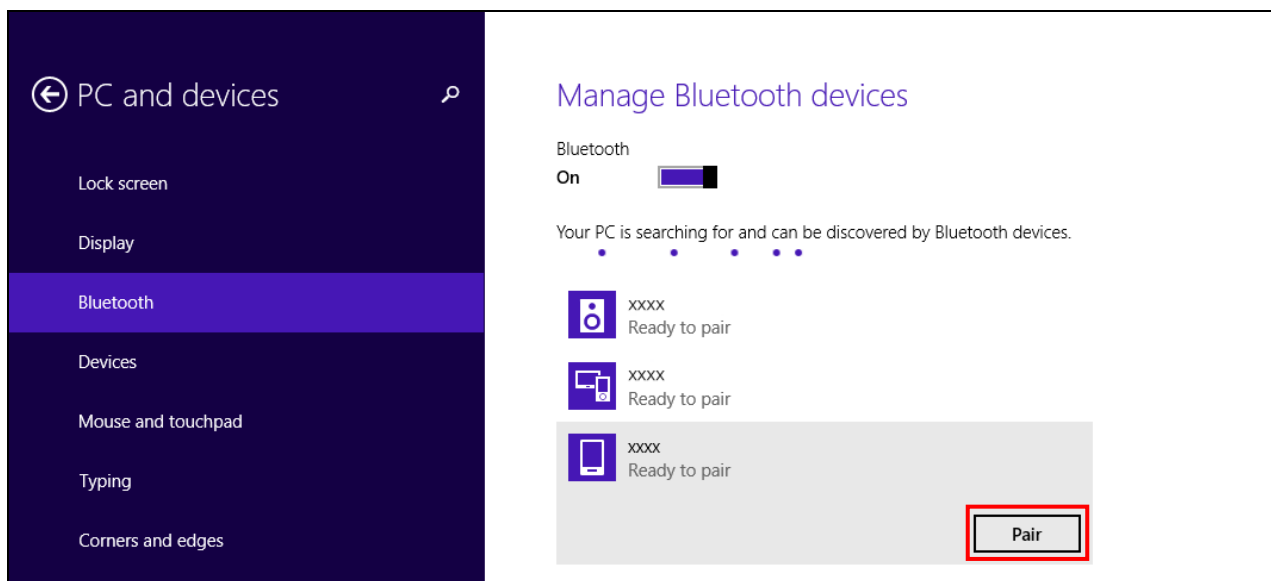


#### NOTE

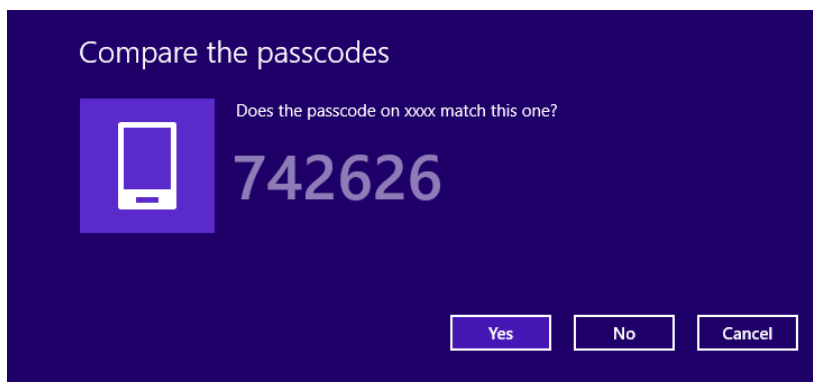
- If the device that you want to add does not appear on the screen, please check if the device is turned on and discoverable.

## Connecting to Wireless Connections

5. The **Manage Bluetooth devices** screen appears. Select the desired device to pair and then click **Pair** to continue.



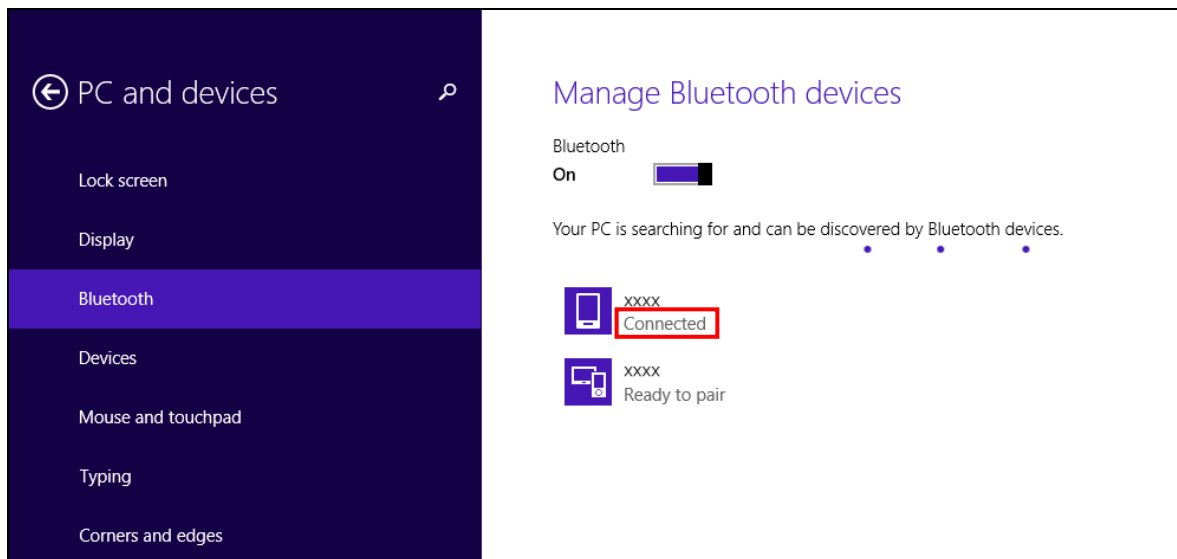
6. Confirm the pairing code and click **Yes** to start pairing.



### NOTE

- The pairing method varies depending the type of device you are pairing with. You may be prompted to enter the pairing code, confirm the pairing code, or the device will pair automatically.

- When the pairing process is complete, the connection status will show "Connected".



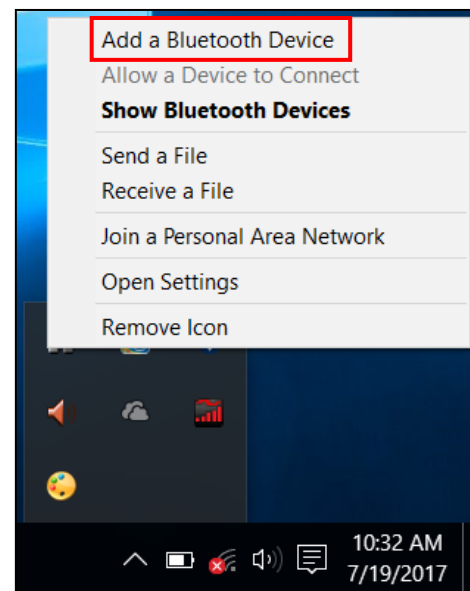
### Windows 10

- Open the I/O cover. Then slide the RF switch to the left to enable the wireless function.
- Press both **Fn** and **F1** keys to turn on the Bluetooth function.
- Click the Bluetooth icon (📶) on the system tray.
- Click **Add a Bluetooth Device**. The system starts scanning for Bluetooth devices and displays the available devices.



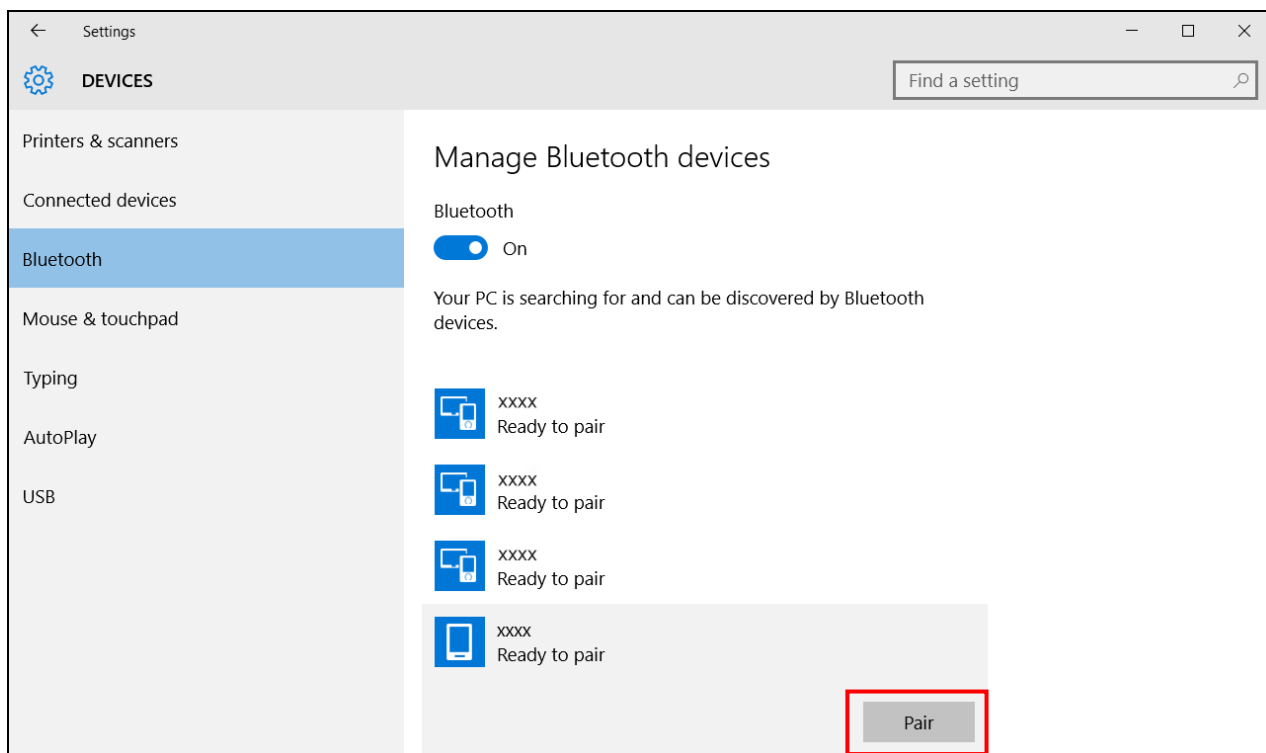
#### NOTE

- If the device that you want to add does not appear on the screen, please check if the device is turned on and discoverable.

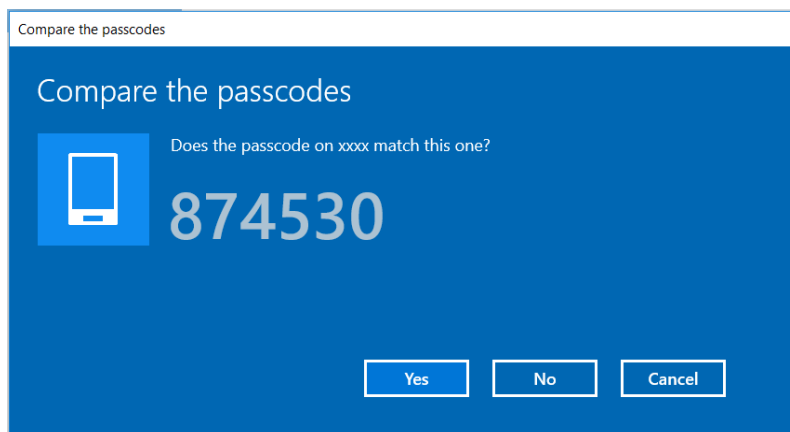


## Connecting to Wireless Connections

5. The **Manage Bluetooth devices** screen appears. Select the desired device to pair and then click **Pair** to continue.



6. Confirm the pairing code and click **Yes** to start pairing.

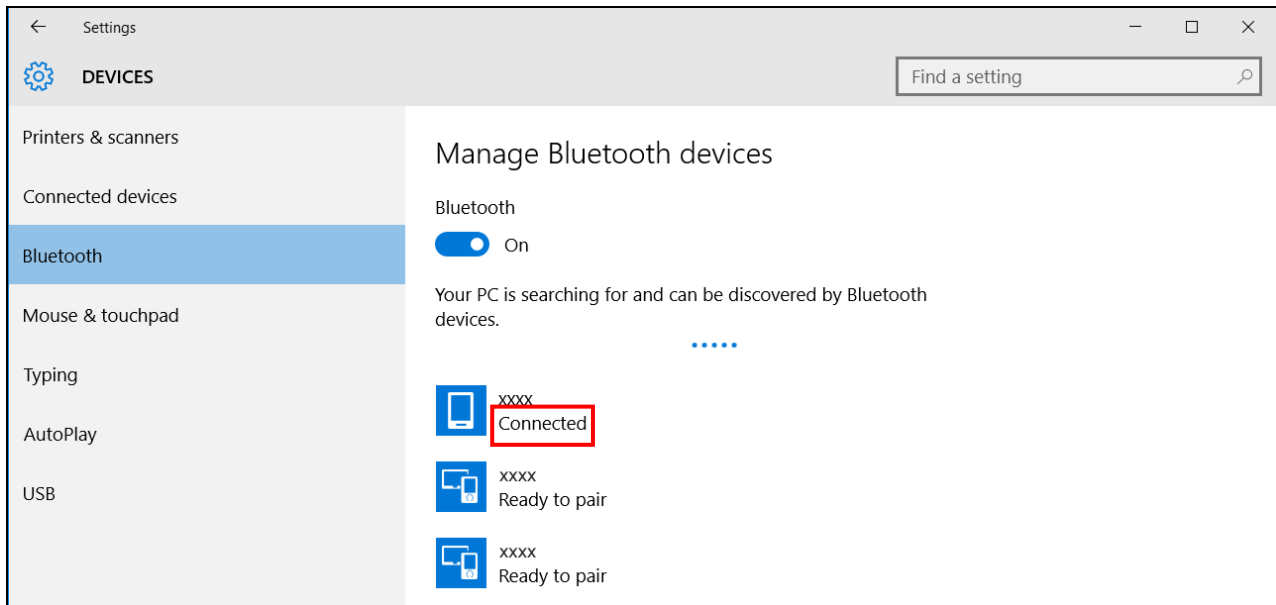


### NOTE

- The pairing method varies depending the type of device you are pairing with. You may be prompted to enter the pairing code, confirm the pairing code, or the device will pair automatically.



7. When the pairing process is complete, the connection status will show "Connected".

**NOTE**

- Most Bluetooth-enabled devices need to be paired with your notebook. The PIN you enter on the notebook must be the same PIN to be entered on the other Bluetooth device.
- Once a partnership has been created, connecting to that device again will no longer require entering the PIN.

# Connecting to a Wireless Wide Area Network (WWAN)

With WWAN function, it allows your tablet PC to connect to the Internet using mobile or cellular data networks.

To enable the function, follow the steps below:


## **Windows 7**

1. Insert a valid SIM card into the SIM card slot. See [Inserting a SIM Card](#) on page 27.
2. Open the I/O cover.



3. Slide the RF switch to the left to enable the wireless function.




4. Launch **Skylight** application.
  - On the Windows desktop, click "Skylight" (  ).
  - Click **Start** > **Skylight**.
5. Click **Connect** to enable the Internet connection via mobile data network.



- To disconnect the connection, click **Disconnect**.



### **Windows 8.1**

- Insert a valid SIM card into the SIM card slot. See [Inserting a SIM Card](#) on page 27.
- Open the I/O cover.
- Slide the RF switch to the left to enable the wireless function.
- On the Windows desktop, click "Skylight" (  ) to launch **Skylight** application.
- Click **Connect** to enable the Internet connection via mobile data network.





## Connecting to Wireless Connections

---

6. To disconnect the connection, click **Disconnect**.



## Windows 10

1. Insert a valid SIM card into the SIM card slot. See [Inserting a SIM Card](#) on page 27.
2. Open the I/O cover.
3. Slide the RF switch to the left to enable the wireless function.
4. Launch **Skylight** application.
  - On the Windows desktop, click "Skylight" (  ).
  - Click  > **Skylight**.
5. Click **Connect** to enable the Internet connection via mobile data network.



6. To disconnect the connection, click **Disconnect**.



# Using the BIOS Setup Utility

Your notebook has a BIOS setup utility which allows you to configure important system settings, including settings for various optional functions of the notebook. This chapter explains how to use the BIOS setup utility.

## BIOS Setup Menu

The BIOS Setup Utility allows you to configure your notebook basic settings. When you turn your notebook on, the system reads this information to initialize the hardware so that it can operate correctly. Use the BIOS setup utility to change your notebook start-up configuration. For example, you can change the security and power management routines of your system.

## Starting the BIOS Setup Utility

You can only enter the BIOS setup utility as the notebook is booting, that is between the time you turn on the notebook and before the Windows interface appears.

If your notebook is already on, shut down your notebook completely (power off) and restart it and then press the **Delete** button to enter the setup utility.

# Navigating and Entering Information in BIOS

Use the following keys to move between fields and to enter information:

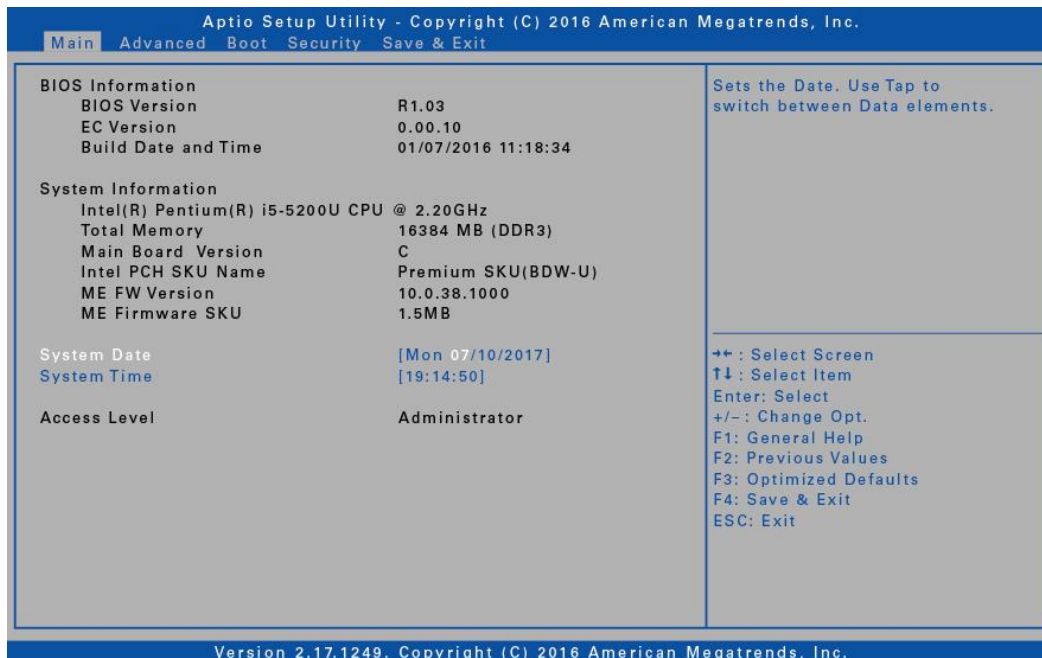
Keyboard	Description
← →	Selects screen.
↓ ↑	Moves up/down to select items.
<b>Enter</b>	Confirms the selection and enters the selected menu screen.
+ / -	Changes an option for the selected items.
<b>F1</b>	Displays the Help screen.
<b>F2</b>	Invokes the previous values.
<b>F3</b>	Loads optimized default values.
<b>F4</b>	Saves the changes and exits Setup.
<b>Esc</b>	Exits any section. If you wish to exit the BIOS utility without saving changes or go to the main menu, then press this key.

Users are allowed to enter new values to replace the default settings in certain fields, and the rest of the fields are specified by system default parameters and cannot be modified by users. Reverse the attribute of the main options and press the **Enter** button to enter into the submenu. Press the **Esc** button to return to the previous configuration page.



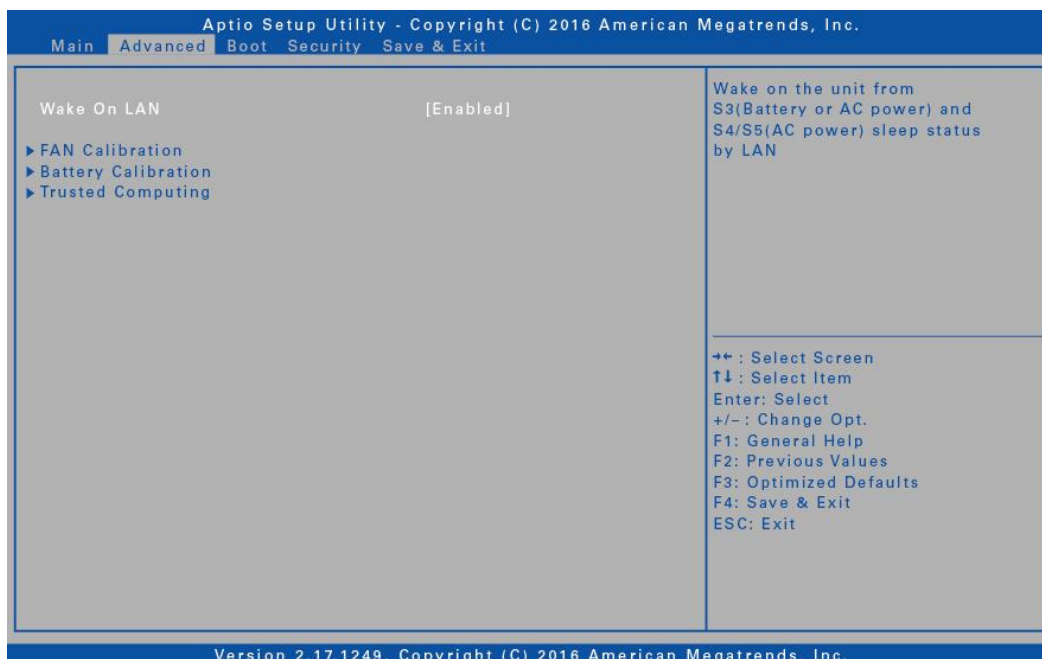
# Main Menu

The Main menu displays the system overview information about BIOS version, system information, total memory size, and access level. You can also set the system date and time.



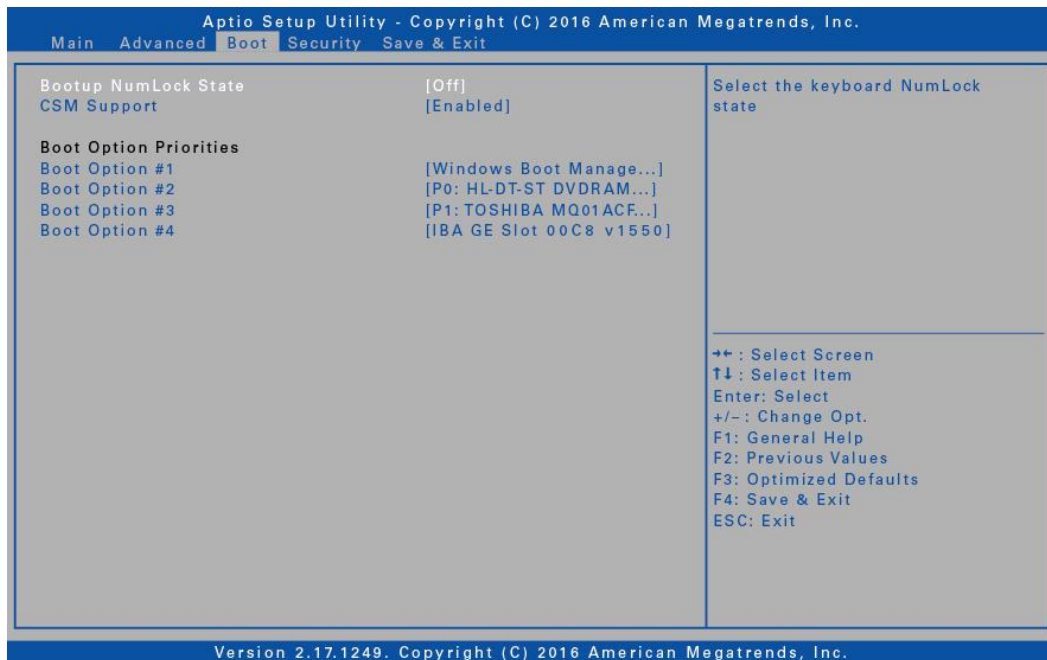
# Advanced Menu

The Advanced menu allows you to enable/disable integrated LAN to wake the system, calibrate fan and battery, and configure Trusted Computing settings.



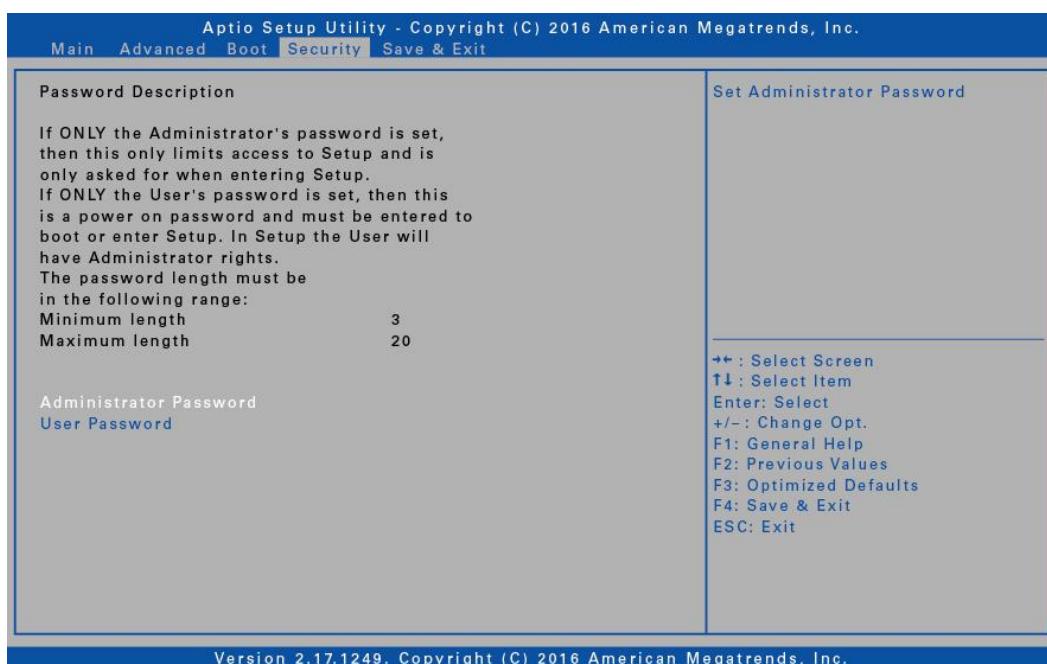
# Boot Menu

The Boot menu allows you to configure the boot settings and boot sequence, and launch CSM.



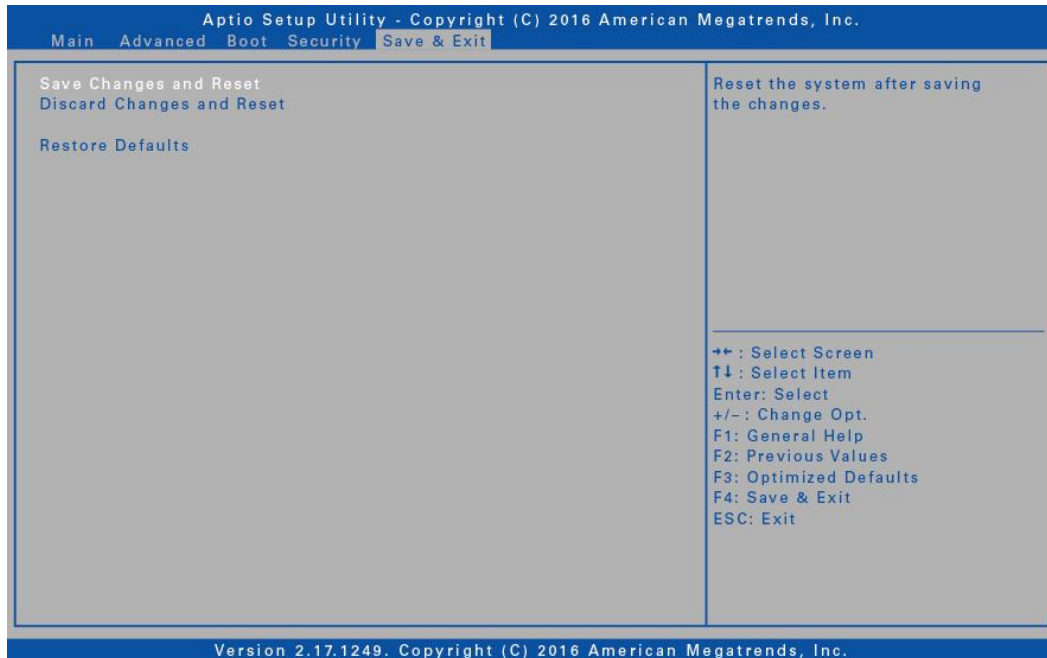
# Security Menu

The Security menu allows you to set or change the Administrator and User passwords.



# Save & Exit Menu

The Save & Exit menu allows you to save/discard the changes and restore the default values for all setup options before leaving the BIOS Setup Menu.

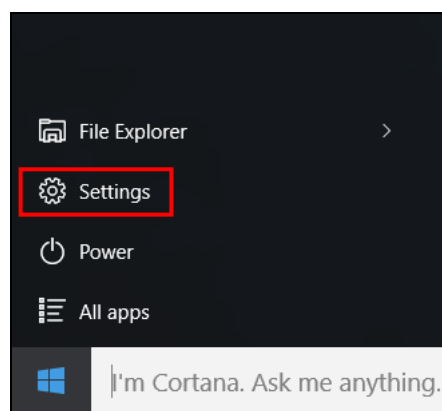


# Windows Recovery (Windows 10)

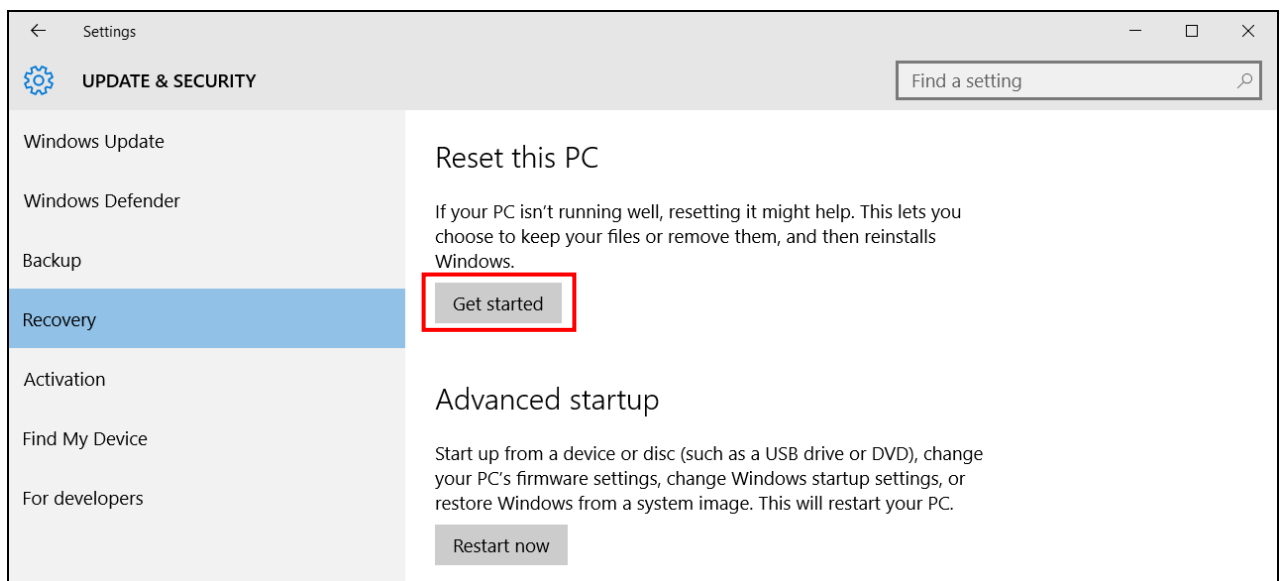
If your notebook isn't running properly, you can reset your Windows operating system.

To reinstall Windows 10, follow the steps below:

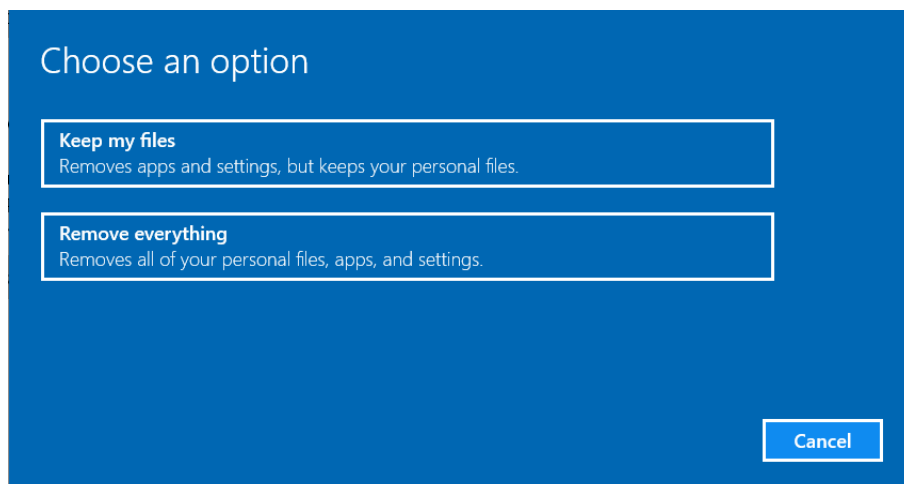
1. Click  > **Settings**.



2. On the SETTINGS page, click **Update & security** > **Recovery**.
3. Click **Get started** to start the recovering process.

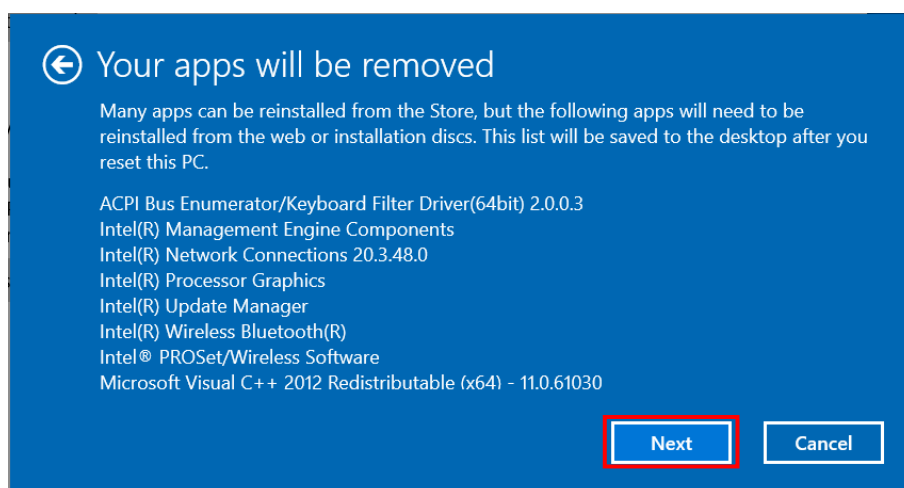


4. Choose one of the following options:

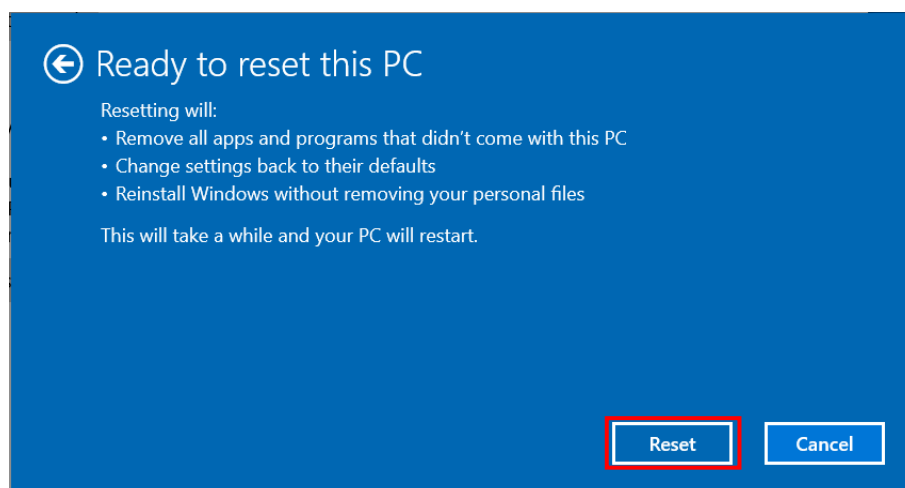


- **Keep my files:** Remove the apps and settings, but it keeps your personal files. The process will take approximately 3~4 hours.
- **Remove everything:** Remove all your personal files, apps, and settings. The process will take approximately 5~6 hours.

5. A notification message will appear on the screen. Click **Next** to continue.



6. Click **Reset** to reset your notebook.

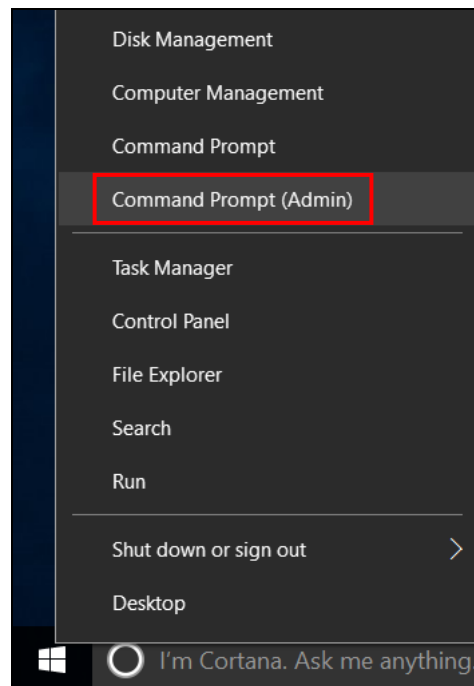


**NOTE**

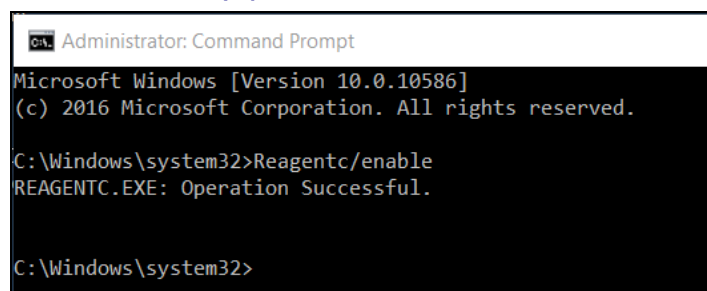
- If below message appears, this indicates **winRE(Windows Reset)** is disabled.



- To enable **winRE**, right-click on  and select **Command Prompt (Admin)**.



Then enter "Reagentc/enable" and press the **Enter** button. If the "Operation Successful" message appears on the screen, this indicates **winRE** is enabled and you can start the recovery process.



Enter "exit" to exit the Command Prompt screen.